

Quick guide to exploring land history

step
1

OBTAIN ESSENTIAL INFO

Visit the [Jeffco Property search tool](#) to obtain the "Legal Description" of the land

DATA ELEMENT

Township
Section
Range
Tract
QSection

NOTES



step
2

SEARCH THE BLM

Use the *Legal Description* of the land to search the [Bureau of Land Management](#) General Land Office Records.

- **Click** the Search Documents By Location Tab
- **Right-click** on the map location.
- **Select** Map Township.
- The township will be drawn on the map.
- The township will appear in the panel above.
- Click **Search** next to the desired township.



step
3

EXPLORE HISTORIC RECORDS

Use names and other information from the BLM to search the [Colorado Historic Newspapers Collection](#) and [Census records](#)

Tips

- Limit your search to Jefferson County
- Limit search by date
- Use Boolean options to match exact phrase



Explore beyond a targeted search

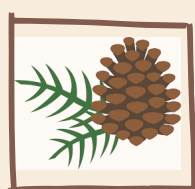
step
4

LEVERAGE SOCIAL MEDIA

Our members have success with using the information gathered from the sources above to learn personal stories about the land by engaging through social media.



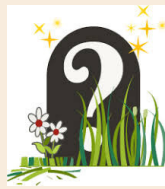
Facebook



Pinecam



Family Search Tools



Find a Grave



Nextdoor



Twitter

CONTACT US

The Conifer Historical Society & Museum is here to support and learn with you!