



Winter 2012-13 Vol. 7, Issue 1

www.ConiferHistoricalSociety.org

CHSM

Conifer Historical Society and Museum

INSIDE:

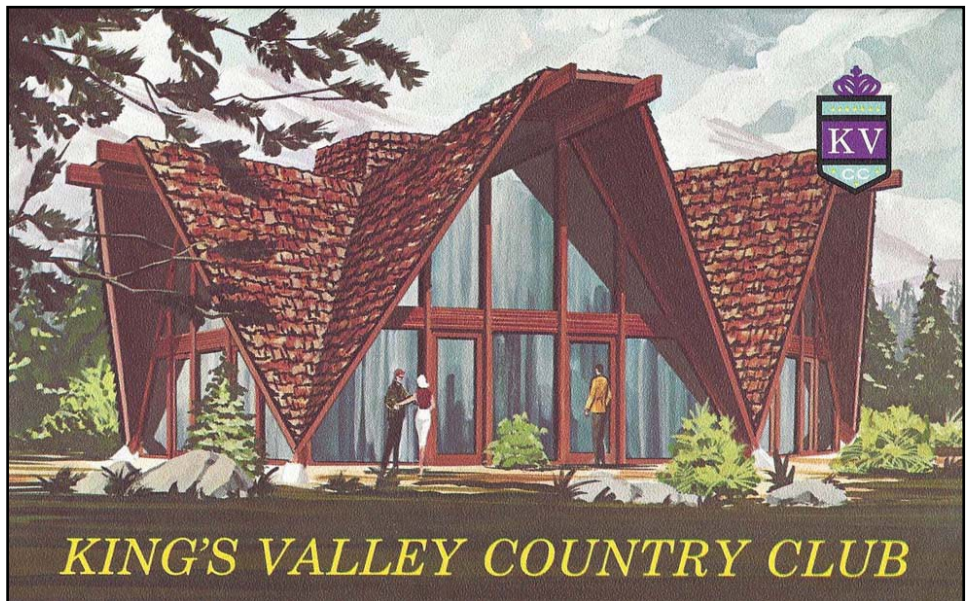
King's Valley Country Club
Page 1

Letter to the Community
Page 2

King's Valley Country Club

What May Have Been

by Elaine Hood



*** DID YOU KNOW ***

The Little White School
(aka Junction School)
will turn 90 years old
in February?

CHSM's mission is to share the region's legacy by collecting, preserving and exhibiting historical and cultural materials and providing public access to services, collections, exhibits and a research library.

This issue of CHSM can be found at:
www.ConiferHistoricalSociety.org

If you lived in Conifer in the 1960s you may remember the excitement surrounding the planned King's Valley Country Club. It was to be built where King's Valley is located today with an ice skating rink, semi-circle swimming pool and dining and dancing in the club house.

A CHSM board member recently found a promotional brochure in a box of papers belonging to her father, a Denver real estate agent. Her parents, both now deceased, never lived in Conifer, having lived in the Park Hill neighborhood of Denver. So it was with great delight that she discovered this treasure.

As with all great promotions, the hype in the brochure may make you chuckle today. The brochure proclaimed:

There's a new, exciting way of life awaiting your pleasure
20 miles west of Denver!

King's Valley Country Club, in the heart of King's Valley

King's Valley continued on page 3

A Letter to the Community

by Janet Shown, CHSM President

Welcome to 2013!

You're going to be delighted about the exciting activities in store at the Conifer Historical Society and Museum in 2013! From fascinating local history exhibits to



and willingness to “get the job done,” as well as their wise counsel and great ideas during discussions and events.

I invite you to get to know our 2013 board by reading the summaries below and by introducing yourself to us at our next event. We look forward to seeing you!

our first miniature golf tournament to a commemoration of the Little White School House's 90th birthday, we plan to celebrate local history and the bonds that tie us to each other and this special locale.

So often, the board of directors is gratified to hear how much you enjoy our events, exhibits and activities. It takes a well-working team to create and sustain an organization that continually engages and enchants the public like CHSM does. We owe a debt of gratitude to CHSM's founders, **Suzi Morris, Grace Helker and Yvonne Ludwig** for the vision and the work that went into creating CHSM in 2006. We also appreciate the gifts and the time that all our previous and current board members have given to build CHSM into a strong and viable organization in just 7 short years.

As 2013 begins, we want to take the time to note the special contributions of Yvonne Ludwig and Vi Polk, whose terms of service as board members ended in December. We have deeply valued and benefitted from their dedication

Elaine Hood will serve as Vice President of Operations after serving as secretary for the past two years. Elaine produces the CHSM newsletter, acts as the organization's photographer, and has filmed and produced oral histories of our local pioneer families for many years. She also keeps us all organized, on-time and task-oriented. She works for the US Antarctic Program in Centennial.

Continuing in her second year as Vice President of Development is Suzi Morris, one of CHSM's founding members. Suzi's passion for Conifer history has inspired all of us over the years to strive for higher and higher goals for CHSM. Among many other activities, Suzi piloted CHSM as President for two terms, heading the effort to incorporate the organization as a 501 (c)3 non-profit organization. In her work life, Suzi is a Human Resources Consultant.

Marsha Petry is entering her second two-year term as Treasurer.

A software developer for Hewlett Packard, Marsha also is a volunteer EMT for the Inter-Canyon Fire Department and enjoys training her water rescue Leonberger dogs. As effective as Marsha has been with QuickBooksPro, she is the first to say that CHSM is outgrowing her expertise in bookkeeping and hopes someone reading this article will contact CHSM with the name of someone who may be able to take over this responsibility.

We welcomed **Jodi Hummel** to the CHSM board last year and are excited she is now Secretary. Jodi and her husband George have been the most amazing additions to our family as George's wood working skills and engineering expertise have solved many problems for us. If you haven't seen the historical miniature golf “obstacles” George has created, you must attend our golf tournament later this summer!

Likewise, returning board member-at-large Kris Laubis (and her husband Tom) have brought an artistic and creative element to CHSM that continue to stun us. They get an idea and a few days later voila! we have a new display structure, sign, fun wood structure (did you see the nutcracker and Christmas tree??), flyer, poster, invitation or other much-appreciated creation. Kris' insightful and frequently humorous discussion contributions keep us all thinking and laughing.

President's Message continued on page 4

Board of Directors

President	Janet Shown
VP, Development	Suzi Morris
VP, Operations	Elaine Hood
Secretary	Jodi Hummel
Treasurer	Marsha Petry
Member at Large	Donna Beck
Member at Large	Kris Laubis
Member at Large	Jeff Polk
Member at Large	Laura Debus

Member at Large	Jean Lambert
Member at Large	Carla Mink

Committee Chairs

Development	– Suzi Morris
Events	– Suzi Morris, Janet Shown
Financials	– Marsha Petry
Membership	– Vi Polk
Volunteers	– Laura Debus

CHSM is published quarterly for the Conifer Community, past, present, and future. It is intended to be an online publication with limited hardcopy distribution. Story ideas and contributions are encouraged. The photo of Norm Meyer's yellow house on the front banner was taken by Lana Turner. Editor: Elaine Hood hood1959@yahoo.com

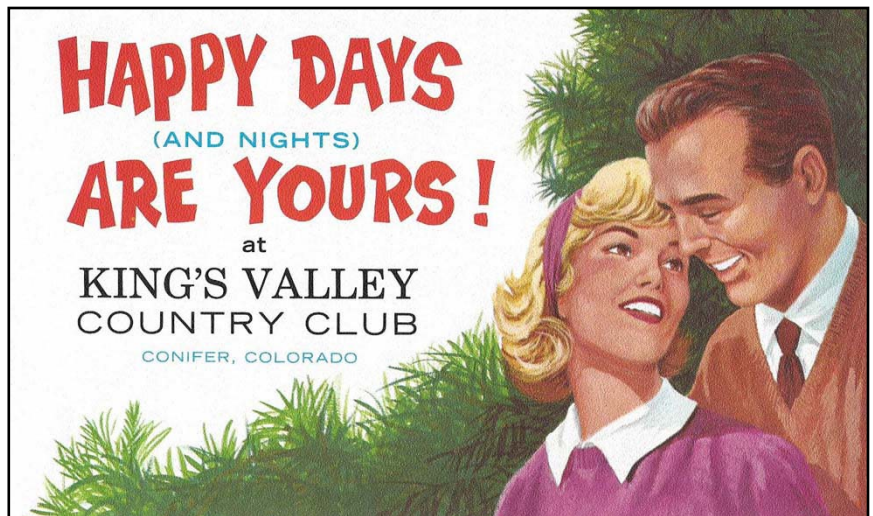
Custom Resort Development, a mile west of and high above Conifer, Colorado, on US Highway 285, offers a year 'round pleasure program, including dining, socializing, swimming, ice skating, relaxing and sightseeing ... in a mountainside setting unsurpassed in this or any other area in America.

Get the picture, with you in it! The Club House itself is a harmonious creation of glass and stone accented with heavy stained beams, rustic cedar shake shingle roof and siding and imposing cathedral-type ceiling. Members and guests look out from the first-level dining, or second-level lounge area to a sweeping, panoramic view of Devil's Head and Pike's Peak.

Both outside and indoor dining around a cherry fireplace are featured, with party dancing on occasion ... and from the upper-level Crow's Nest Bar, visitors enjoy an around-the-compass view of Devil's Head, Pike's Peak and the Continental Divide.

A heated, glass-protected swimming pool and an open ice skating rink are popular with youngsters and oldsters alike; and surrounding the Club House are over 600 acres of green, lush sites dotted with attractive single-occupancy and planned condominium homes.

While King's Valley Country Club is planned primarily for home owners in King's Valley Custom Resort Development, memberships also are available to others who can appreciate the many benefits to be derived from the charming mountainside retreat less than an hour's drive from Denver. SEE IT! BELIEVE IT! NOW IS THE



TIME TO "MAKE YOUR MOVE" TO THE MOUNTAINS.

King's Valley Custom Resort Development is Colorado's fastest-growing, deluxe mountain home area. Appealing to the discriminating, it almost defies description with its wide variety of desirable and secluded home sites in this enchanting locale.

Also, soon to be completed is a totally new and modernistic version of a condominium complex ... modestly priced and designed to luxuriously accommodate the single person or family.

The investments of all King's Valley property and condominium home owners are protected by a functioning Architectural Committee to prevent obtrusive, inappropriate or unsafe building practices.

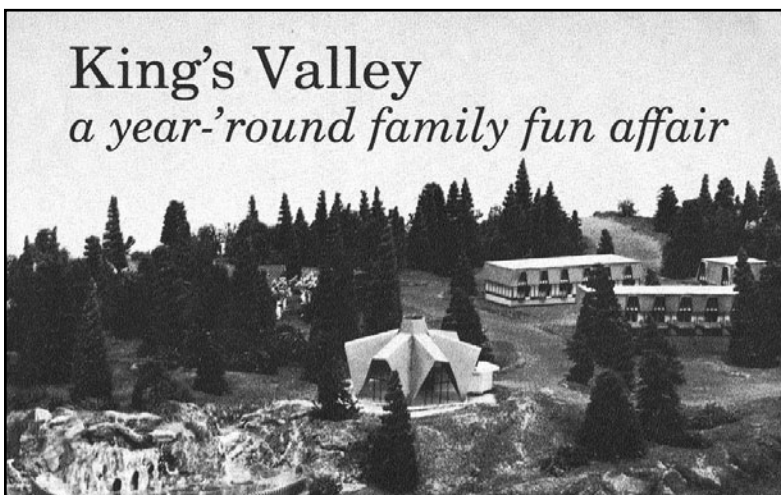
Come, pay us a visit at your first opportunity. You'll enjoy the scenic, 20-mile drive from Denver ... but most of all, you'll thrill to the breathtaking sights at every turn on the road, high up in the King's Valley Custom Resort area.

Wow! It sounded marvelous, didn't it!? The development was being handled by Chart Development of Texas, Inc. The papers show dates in 1966 - 1967 for correspondence with potential investors and it appears there were some problems with the developers.

CHSM would like to learn more about this planned resort. If you have information, please send us an email or give us a call.

hood1959@yahoo.com, or 720.333.0223

Do you have hidden treasures in your closet? A simple brochure such as this one gives us a little bit more history of Conifer.



Donna Long Beck also returns as a board member-at-large for the 2013-2014 term. She recently returned to Colorado from Chicago and has roots dating back to the Conifer homesteading era, as she is the granddaughter of Rudy and May Long and the daughter of Betty Fields Long. You will be seeing a lot more of Donna as she assumes many of CHSM's public relations activities, a position that superbly suits her enthusiastic and outgoing nature. Donna currently works at Community Banks of Colorado in Conifer continuing a career in banking that began in Evergreen in 1968.

Laura Debus has been active in CHSM for quite a few years conducting community outreach and volunteer coordination. She distributes and updates CHSM newsletter notebooks in Conifer, coordinates the sale and distribution of CHSM's unique notecards, and helps us post flyers and posters within the community. For the past year, Laura has impressed volunteers and board members with her thoughtful and organized performance as Volunteer Coordinator. She will continue to lead volunteer efforts for CHSM events as a new board member-at-large. Originally from New York City, Laura has lived in the area with her husband Dave for more than 20 years.

Carla Mink joined our team this year as we began the acquisition process of the Little White School. We are thrilled that she accepted a term as a board member-at-large for the 2013-2014 term. Carla was a teacher and director of the pre-school up through this past school year. Her knowledge of the history of the structures, utilities, students, families and everything else that comes with this remarkable property is priceless to us.

Jeff Polk is a new board member-at-large, but he's not new to CHSM. Over several years, he has contributed great expertise in construction and restoration, and has helped the Midway House Museum Project committee plan and oversee the Historic Structure Assessment on the Norm Meyer home. Recently, he has been busy stabilizing and painting portions of the exterior of the Little White School House. If you see someone on the property at 6 am, it's probably Jeff!

Our final new board member-at-large is **Jean**

Lambert, who lives quite close to the Little White School property. She (and her husband Bill) spent their careers in education at West Jeff Middle School. Jean has been active in CHSM since the beginning years and she is overdue for gaining the title that goes along with the work she does. Jean claims she is retired, but her schedule exhausts the rest of us!

I am privileged to serve in 2013 in my second year of my second term as President. The gains that I have made as a person through my association with CHSM far outweigh my gifts to the organization, and I am grateful for the opportunity to continue to work with this impressive group of devoted and knowledgeable volunteers. There is always room for more volunteers, so please feel free to contact me if you're interested in joining us!

Janet Shown

WANTED

CHSM needs quality donations

- a new computer
- laser printer
- Past Perfect software
- tables
- folding chairs
- vacuum cleaner
- legal assistance
- volunteers to
 - help monitor exhibits
 - organize events
 - garden/landscape

Conifer is on its way to having a world class museum. Join us for the adventure!

CALENDAR OF EVENTS Call us with questions: 720.333.0223

January 9	CHSM Board Meeting; Little White School, 6 pm
February 13	CHSM Board Meeting; Little White School, 6 pm
February 16	90th Birthday Party for the Little White School
March 10	Stormy Weather - Come Share Your Story
April 18	Membership Meeting